



We are in your environment



20
•year



SHIP WASTES MANAGEMENT

MARPOL 73/78 Annex-1, IV and V wastes

- Bilge
- Sludge
- Waste Oil
- Slop
- Waste Ballast
- Waste Water
- Waste

Our Waste Collection Fleet

- 10 Annex - 1 and Annex - IV waste purchase ships
- 3 Annex -V waste purchase ships
- 1 Annex -1 and Annex -IV waste purchase land tanker

The wastes are collected by our fleet 7 days 24 hours

The Annex -1, Annex IV and Annex V wastes within the context of MARPOL 73/78 of the all ships waiting in the areas of port, shipyard and anchoring within the border of Istanbul Metropolitan Municipality;

- MARPOL 73/78 Contract
- 2000/59/EC European Parliament Council Directive
- Law for Metropolitan Municipalities
- Collecting Wastes from Ships are carried out in accordance with Control of Wastes Regulations



OUR WASTE PURCHASE SERVICE AREAS

- Istanbul Port Area
- Ambarlı Port Area
- Tuzla Port Area
- Silivri Port Area
- Sile Port Area



WASTE PURCHASE RATES

GRT	1st Part				2st Part				
	Amount of Waste to be Purchased Against Fixed Fee (m³)				Waste Fee (€/m³)				
	Fixed Fee (€)	MARPOL Annex-I Bilge Sludge Waste Oil	MARPOL Annex-IV Waste Water	MARPOL Annex-V Waste	WORKING HOURS AND POSITION	ANNEX		MARPOL ANNEX- IV WASTE WATER	MARPOL ANNEX-V WASTE
						SLOP WASTE BALLAST	BILGE SLUDGE WASTE OIL		
0-1000	80	1	2	1	AT PORT IN WORKING HOURS	1,5 (€)	35 (€)	15 (€)	25 (€)
1001-5000	140	3	2	1					
5001-10000	210	4	3	2	AT PORT OUT OF WORKING HOURS	1,875 (€)	43,75 (€)	18,75 (€)	31,25 (€)
10001-15000	250	5	4	2					
15001-20000	300	6	5	2	OFF-SHORE AT ANCHOR IN WORKING HOURS	5 (€)	45,5 (€)	19,5 (€)	32,5 (€)
20001-25000	350	7	5	3					
25001-35000	400	8	6	3	OFF-SHORE AT ANCHOR OUT OF WORKING HOURS	6,25 (€)	56,875 (€)	24,375 (€)	40,625 (€)
35001-60000	540	10	10	4					
60000 - +	720	13	15	5					

Working hours are between 08:00 and 17:00 from Monday to Saturday

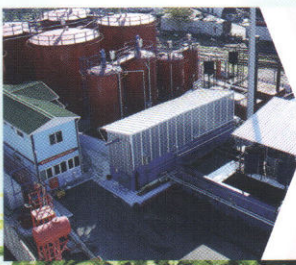
According to the legislations, the ships coming to the Turkish ports must pay a fixed fee at the first port. The ships paying the fixed fee can be given the wastes defined in the 1st Part in case that they demand any waste against the fixed fee paid.



Member of
Chamber of Shipping

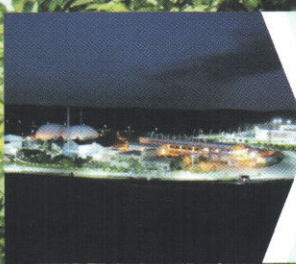
Member of
European Waste Collectors Union





WASTE ACCEPTANCE PLANT

The oil and oil derived wastes from the ships within the İstanbul city borders are recycled and made reusable. In the plant where 110.000 m3 waste is processed annually, the oil and oil derived wastes such as bilge, sludge, waste oil, slop are refined through physical and chemical processes. After the processes done, a 20.000 m3 waste oil is regained to economy.



REGULAR STORAGE

The wastes which have not been recycled are stored regularly and discharged in Odayeri Landfill in İstanbul European Side and in Kömürcüoda Landfill İstanbul Anatolian Side.



ELECTRICITY GENERATION FROM LANDFILL GAS

In the regular storage areas, the wastes become stable by rotting in consequence of microbial activities in the oxygenless environment, so produce landfill gas. This gas is utilized in the electricity generation from landfill gas plant in order to generate electricity.



LEACHATE TREATMENT

Leachate Treatment collected from landfill areas is treated through Membran, Bioreactor and NF technology not harming the nature.



MANAGEMENT OF MEDICAL WASTES

While the medical wastes are treated in the sterilization and incineration plants electricity is generated as well.

MANAGEMENT OF INDUSTRIAL WASTES

The wastes such as solid sludge, oily machine parts, accumulator and batteries are stored in our licenced plants and disposed.



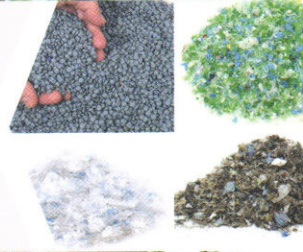
PRODUCING COMPOST

Organic wastes are naturally processed by microorganisms under controlled circumstances in the Recycle and Compost Plant. The acquired compost is used for the various parks and gardens of Istanbul.



PRODUCING GRANULE

Granule is produced from the wastes such as PE, PP, PS in the Recycle and Compost Plants; PLASTIC burrs are produced from the PLASTIC wastes. The acquired granule is used for the production of dustbins and flower pots; PLASTIC burrs are used for the production of fiber glass.



RDF (REFUSE-DERIVED FUEL) PRODUCTION

The wastes such as nylon bags, nylons and fibres that have a high calorific value and have no change of being recycled are transformed into alternative fuel in RDF Production.



ENVIRONMENT LAB

Our lab, carrying out analysis activities within the scope of the Regulation of Solid Wastes Control, Discharge Regulation of İSKİ Waste Water to Sewerage and Water Contamination Control Regulation, works over 170 parametres.





Istanbul Environment Management Industry and Trade Inc.

Bahriye Cad. Toprak Tabya Sk. No: 4 Kat: 5, Beyoğlu - İstanbul / TURKEY

Phone: +90212 238 35 41 • Fax: +90212 238 35 42

E-mail: deniz@istac.com.tr • www.istac.com.tr



ISTANBUL METROPOLITAN MUNICIPALITY